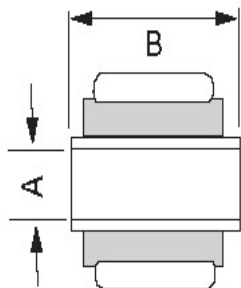


# MONROE SHOCK ABSORBER PART #'s ARRANGED BY UPPER MOUNT STYLE

Letters after compressed and extended: c = Bumper Stop Unit. Dimension shown at Bumper Contact., d = Hydraulic Lockout Unit. Dimension shown at Lockout Contact.

## BUSHING AND SLEEVE



### BUSHING AND SLEEVE UPPER MOUNT

Part #	A	B	Lower Style			Compresses	Extended	Travel	Dust Shield	Parts Pack
550005	.500	1.375	B&S	.500	1.375	9.875	14.875	5.000	Yes	None
555035	.500	1.375	B&S	.500	1.375	9.875	14.875	5.000	Yes	None
33076	.500	1.375	B&S	.500	1.375	10.000	14.625	4.625	Yes	None
37090	.500	1.375	B&S	.500	1.375	10.000	14.750	4.750	Yes	None
33074	.500	1.375	B&S	.500	1.375	11.875	18.250	6.375	Yes	P816
37040	.500	1.375	B&S	.500	1.375	11.875	18.375	6.500	Yes	P816
32374	.500	1.375	B&S	.500	1.375	14.125	22.750	8.625	Yes	None
32379	.500	1.375	B&S	.500	1.625	11.750	18.250	6.500	Yes	P816
37187	.500	1.375	LOOP/M10 or	PIN/.625/1.312		9.375	14.250	4.875	Yes	P19
37218	.500	1.500	B&S	.500	1.500	11.375	17.375	6.000	Yes	None
66667	.500	1.500	B&S	.500	1.500	12.250	19.750	7.500	Yes	None
66666	.500	1.500	B&S	.500	1.500	13.875	22.875	9.000	Yes	None
5868	.500	1.500	B&S	12MM	1.875	11.500	17.500c	6.000	Yes	None
33273	.500	1.500	B&S	12MM	1.875	12.250	17.375c	5.125	Yes	None
911514	.500	1.625	B&S	.500	1.625	11.375	16.625	5.250	Yes	None
37246	.500	1.625	B&S	.500	1.625	11.500	16.875	5.375	Yes	None
37099	.500	1.625	B&S	.500	1.625	11.625	16.500c	4.875	Yes	None
550008	.500	1.625	B&S	.500	1.625	12.875	21.000	8.125	Yes	None
555038	.500	1.625	B&S	.500	1.625	12.875	21.000	8.125	Yes	None
37091	.500	1.625	B&S	.500	1.625	13.125	20.875	7.750	Yes	None
550006	.500	1.625	B&S	.500	1.625	15.000	24.625c	9.625	Yes	None
555036	.500	1.625	B&S	.500	1.625	15.000	24.625c	9.625	Yes	None
911261	.500	1.625	B&S	.500	1.625	15.500	25.000	9.500	Yes	None
911262	.500	1.625	B&S	.500	1.625	16.500	27.250	10.750	Yes	None

32367	.500	1.625	B&S	.500	1.687	15.125	24.625c	9.500	Yes	None
557011	.500	1.625	B&S	.750	1.750	15.250	23.875d	8.625	Yes	None
5910	.500	1.625	B&S	12MM	1.875	11.250	16.750	5.500	Yes	None
32385	.500	1.625	LOOP	.6875	1.562	14.875	24.375	9.500	Yes	None
37094	.500	1.625	LOOP	.6875	1.562	14.875	24.375	9.500	Yes	None
32375	.500	1.625	LOOP	.6875	1.562	15.750	26.250	10.500	Yes	None
37046	.500	1.625	LOOP	.6875	1.562	15.750	26.125	10.375	Yes	None
32364	.500	1.625	LOOP	.6875	1.562	16.875	28.375	11.500	Yes	None
5837	.500	1.625	STEM	.375-16		11.375	18.625	7.250	Yes	P1134
911281	.500	1.687	B&S	.500	1.687	12.625	19.500	6.875	Yes	None
33086	.500	1.687	B&S	.500	1.687	12.875	21.000	8.125	Yes	None
37042	.500	1.687	B&S	.500	1.687	13.375	21.000	7.625	Yes	None
911258	.500	1.687	B&S	.500	1.687	13.625	21.750	8.125	Yes	None
5893	.500	1.687	B&S	.625	1.6875	9.375	14.250	4.875	Yes	None
33115	.500	1.687	B&S	.625	1.6875	9.500	14.375	4.875	Yes	None
66691	.500	2.250	B&S	.625	2.000	15.000	24.000	9.000	Yes	None
555042	.500	2.375	B&S	.500	2.375	8.250	11.500	3.250	Yes	None/P1134
37062	.500	2.437	B&S	.500	1.625	11.250	16.500c	5.250	Yes	None
32373	.500	2.437	B&S	.500	1.625	11.375	15.875d	4.500	Yes	None
911511	.500	2.437	B&S	.500	1.625	11.375	16.625	5.250	Yes	None
37130	.500	2.437	B&S	.500	1.625	11.750	16.000c	4.250	Yes	None
40200	.500	2.437	B&S	.500	2.437	11.625	17.875	6.125	Yes	None
40201	.500	2.437	B&S	.500	2.437	11.625	17.875	6.125	Yes	None
555045	.562	1.625	B&S	.562	1.625	12.750c	16.125c	3.375	Yes	None
33101	.562	1.625	B&S	.562	1.625	13.125c	16.250c	3.125	Yes	None
557004	.562	1.625	B&S	.562	1.625	14.000	22.000	8.000	Yes	None
66642	.562	1.625	B&S	.562	1.625	14.125	22.875	8.750	Yes	None
32384	.562	1.625	B&S	.562	1.625	14.250	23.000	8.750	Yes	None
32344	.562	1.625	B&S	.562	1.625	14.375	23.000c	8.625	Yes	None
37166	.562	1.625	B&S	.562	1.625	14.625	23.500c	8.875	Yes	None
32348	.562	1.625	B&S	.562	1.625	14.750	23.500c	8.750	Yes	None
32345	.562	1.625	B&S	.562	1.625	15.000	24.000c	9.000	Yes	None
32329	.562	1.625	B&S	.562	1.625	15.375	25.500c	10.125	Yes	None
911504	.562	1.625	B&S	.562	1.625	15.375	24.125	8.750	Yes	None
911506	.562	1.625	B&S	.562	1.625	15.375	23.750	8.375	Yes	None
37103	.562	1.625	B&S	.562	1.625	15.500	24.625	9.125	Yes	None
37105	.562	1.625	B&S	.562	1.625	15.500	24.625	9.125	Yes	None
32327	.562	1.625	B&S	.562	1.625	15.625	23.875c	8.250	Yes	None
32380	.562	1.625	B&S	.562	1.625	15.625	26.125	10.500	Yes	None
37150	.562	1.625	B&S	.562	1.625	15.625	23.750c	8.125	Yes	None
32341	.562	1.625	B&S	.562	1.625	16.000	26.125c	10.125	Yes	None
32365	.562	1.625	B&S	.562	1.625	16.000	26.125	10.125	Yes	None

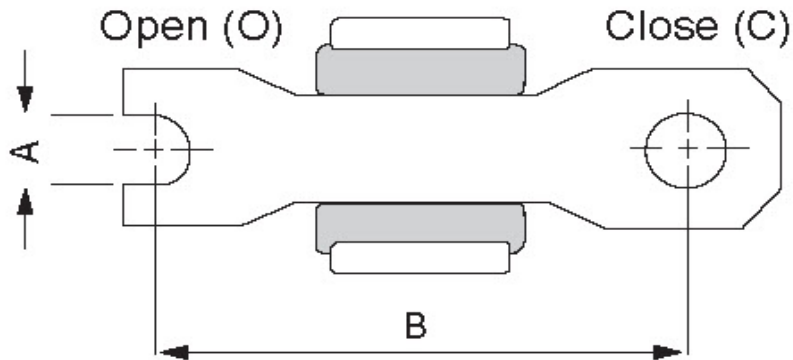
32391	.562	1.625	B&S	.562	1.625	16.000	26.500	10.500	Yes	None
37164	.562	1.625	B&S	.562	1.625	16.000	26.000c	10.000	Yes	None
37207	.562	1.625	B&S	.562	1.625	16.000	26.500	10.500	Yes	None
32401	.562	1.625	B&S	.562	1.625	16.500	27.500	11.000	Yes	None
911502	.562	1.625	B&S	.562	1.625	16.750	25.625	8.875	Yes	None
37152	.562	1.625	B&S	.562	1.625	16.875	25.500c	8.625	Yes	None
550019	.562	1.625	B&S	12MM	1.625	13.125	21.125	8.000	Yes	None
555041	.562	1.500	B&S	.562	1.500	14.125	22.875	8.750	Yes	None
37109	.562	1.500	LOOP	.75	1.562	12.875	19.625c	6.750	Yes	P120
5843	.562	2.4375	B&S	.562	1.625	10.000c	12.875c	2.875	Yes	None
33100	.562	2.4375	B&S	.562	1.625	10.250c	12.750c	2.500	Yes	None
32363	.562	2.4375	B&S	.750	1.750	14.500	22.750c	8.250	Yes	None
550020	.562	2.4375	LOOP	14MM	1.562	12.625	20.250	7.625	Yes	None
37203	.625	1.6875	B&S	12MM	1.625	14.000	21.875c	7.875	Yes	None
32335	.625	1.6875	B&S	12MM	1.875	14.375	23.125c	8.750	Yes	None
37158	.625	1.6875	B&S	12MM	1.875	14.500	23.250c	8.750	Yes	None
911275	.625	1.187	B&S	.562	1.625	12.375	19.500	7.125	Yes	None
911276	.625	1.187	B&S	.562	1.625	12.750	20.250	7.500	Yes	None
911273	.625	1.187	B&S	.562	1.625	13.375	21.000	7.625	Yes	None
39003	.625	1.187	B&S	.625	1.187	9.375	13.250	3.875	No	None
911519	.625	1.375	B&S	12MM	1.500	16.000	25.500	9.500	Yes	None
5775	.625	1.500	LOOP	.6875	1.562	13.375	19.750	6.375	Yes	None
37244	.625	1.562	B&S	20MM	1.562	10.875	15.750	4.875	Yes	None
39008	.625	1.750	B&S	.625	1.750	10.750	14.750c	4.000	Yes	None
39009	.625	1.750	B&S	.625	1.750	10.750	14.625c	3.875	Yes	None
557003	.625	2.000	B&S	.500	1.375	10.625	15.750	5.125	Yes	P1234
37249	.750	1.375	SPECIAL(?)			14.000	22.000	8.000	Yes	None
557022	.750	1.750	B&S	.750	1.750	12.250	17.625d	5.375	Yes	None
66636	.750	1.750	B&S	.750	1.750	13.375	20.000d	6.625	Yes	None
557013	.750	1.750	B&S	.750	1.750	13.500	20.000d	6.500	Yes	None
557018	.750	1.750	B&S	.750	1.750	13.500	20.000d	6.500	Yes	None
557012	.750	1.750	B&S	.750	1.750	13.625	20.500d	6.875	Yes	None
557026	.750	1.750	B&S	.750	1.750	13.625	20.500d	6.875	Yes	None
66502	.750	1.750	B&S	.750	1.750	13.875	22.500	8.625	Yes	None
555026	.750	1.750	B&S	.750	1.750	14.000	21.250d	7.250	Yes	None
555027	.750	1.750	B&S	.750	1.750	14.000	21.250d	7.250	Yes	None
555028	.750	1.750	B&S	.750	1.750	15.000	23.250d	8.250	Yes	None
555029	.750	1.750	B&S	.750	1.750	15.000	23.250d	8.250	Yes	None
557027	.750	1.750	B&S	.750	1.750	15.250	23.500d	8.250	Yes	None
557010	.750	1.750	B&S	.750	1.750	15.375	23.750d	8.375	Yes	None
557023	.750	1.750	B&S	.750	1.750	15.375	23.875d	8.500	Yes	None
65421	.750	1.750	B&S	.750	1.750	15.500	24.250d	8.750	Yes	None

551002	.750	1.750	B&S	.750	1.750	15.750	24.625d	8.875	Yes	None
557014	.750	1.750	B&S	.750	1.750	15.750	24.625d	8.875	Yes	None
557007	.750	1.750	B&S	.750	1.750	16.000	25.625	9.625	No	None
557031	.750	1.750	B&S	.750	1.750	16.500	26.250d	9.750	Yes	None
557002	.750	1.750	B&S	.750	1.750	16.875	27.625	10.750	No	None
557028	.750	1.750	B&S	.750	1.750	16.875	27.000d	10.125	Yes	None
551001	.750	1.750	B&S	.750	1.750	17.000	28.250	11.250	Yes	None
65482	.750	1.750	B&S	.750	1.750	17.375	28.000d	10.625	Yes	None
557001	.750	1.750	B&S	.750	1.750	17.375	29.125	11.750	Yes	P1232
557015	.750	1.750	B&S	.750	1.750	17.875	29.000d	11.125	Yes	None
557032	.750	1.750	STEM	.625-11		13.625	22.000	8.375	Yes	P1071/P1231
66692	.750	2.750	STEM	.625-11		13.750	22.625	8.875	Yes	P1071/P1231
557030	.750	3.8125	B&S	.750	3.187	14.750	22.250d	7.500	Yes	None
557036	.750	3.8125	B&S	.750	3.187	16.750	27.000	10.250	Yes	None
557037	.750	3.8125	STEM	.625-11		13.625	21.500	7.875	Yes	P10171/P1231
5864	10MM	1.625	B&S	10MM	1.625	13.250	21.625c	8.375	Yes	None
5959	10MM	1.625	B&S	10MM	1.625	13.375	21.500c	8.125	Yes	None
5962	10MM	1.625	B&S	10MM	1.625	13.375	21.500c	8.125	Yes	None
33095	10MM	1.625	B&S	10MM	1.625	13.375	21.500c	8.125	Yes	None
5948	10MM	1.625	B&S	10MM	1.625	14.000	22.750c	8.750	Yes	None
33131	10MM	1.625	B&S	10MM	1.625	14.000	22.750c	8.750	Yes	None
37201	10MM	1.625	STEM	.375-24		10.125	15.625	5.500	Yes	P591
5951	10MM	2.375	STEM	.375-24		10.250	15.750	5.500	Yes	None
33133	10MM	2.375	STEM	.375-24		10.250	15.750	5.500	Yes	None
32545	12MM	1.250	B&S	12MM	1.250	13.625	22.750	9.125	Yes	P110
5764	12MM	1.250	LOOP	.625	1.312	11.750	18.375c	6.625	Yes	None
5767	12MM	1.437	B&S	12MM	1.125	11.875	15.875	4.000	B	None
32333	12MM	1.500	B&S	12MM	1.500	12.500	20.125c	7.625	Yes	None
37156	12MM	1.500	B&S	12MM	1.500	12.750	20.250c	7.500	Yes	None
911144	12MM	1.500	B&S	12MM	1.500	13.625	21.750	8.125	Yes	None
32322	12MM	1.500	B&S	12MM	1.500	13.750	21.750c	8.000	Yes	None
37144	12MM	1.500	B&S	12MM	1.500	13.750	21.750	8.000	Yes	None
37055	12MM	1.500	B&S	12MM	1.500	14.000	22.500c	8.500	Yes	None
32288	12MM	1.500	B&S	12MM	1.500	14.125	22.375c	8.250	Yes	None
32332	12MM	1.500	B&S	12MM	1.500	14.125	20.125c	6.000	Yes	None
37154	12MM	1.500	B&S	12MM	1.500	14.125	20.125c	6.000	Yes	None
32323	12MM	1.500	B&S	12MM	1.500	14.375	23.125c	8.750	Yes	None
37145	12MM	1.500	B&S	12MM	1.500	14.375	23.125	8.750	Yes	None
37202	12MM	1.500	B&S	12MM	1.500	14.875	21.250d	6.375	Yes	None
37110	12MM	1.562	B&S	12MM	1.500	10.625	15.750c	5.125	Yes	None
37155	12MM	1.562	B&S	12MM	1.562	10.500	16.625c	6.125	Yes	None
32592	12MM	1.562	B&S	12MM	1.562	10.625	16.250c	5.625	Yes	P110

39031	12MM	1.562	SPECIAL(?)	14.500c	18.125c	3.625	Yes	None			
32230	12MM	1.625	B&S	12MM	1.500		11.875	18.125c	6.250	Yes	None
37061	12MM	1.625	B&S	12MM	1.500		12.000	18.125c	6.125	Yes	None
37123	12MM	1.625	B&S	12MM	1.625		11.375	17.000c	5.625	Yes	None
40202	12MM	1.625	B&S	12MM	1.625		11.625	17.875	6.125	Yes	None
37065	12MM	1.625	B&S	12MM	1.625		12.000	18.125c	6.125	Yes	None
32319	12MM	1.625	B&S	12MM	1.625		14.500	22.750c	8.250	Yes	None
37138	12MM	1.625	B&S	12MM	1.625		14.625	22.750c	8.125	Yes	None
911277	12MM	1.625	B&S	12MM	1.625		14.750	24.000	9.250	Yes	None
32321	12MM	1.625	B&S	12MM	1.625		15.250	24.625c	9.375	Yes	None
37140	12MM	1.625	B&S	12MM	1.625		15.375	24.625c	9.250	Yes	None
37242	12MM	1.625	B&S	12MM	1.750		14.625	22.250	7.625	Yes	None
911509	12MM	1.625	B&S	12MM	1.750		14.625	23.250	8.625	Yes	None
911510	12MM	1.625	B&S	12MM	1.750		14.625	22.375	7.750	Yes	None
37241	12MM	1.625	B&S	12MM	1.750		17.625	23.250	5.625	Yes	None
37204	12MM	1.687	B&S	.625	1.6875		15.125	24.250c	9.125	Yes	None
5986	12MM	1.687	B&S	12MM	1.437		12.875c	17.875c	5.000	Yes	None
37064	12MM	1.687	B&S	12MM	1.687		14.750	23.125c	8.375	Yes	None
5779	12MM	1.750	B&S	.562	1.625		10.500	16.125	5.625	Yes	None
5780	12MM	1.750	B&S	.562	1.625		11.500	17.750	6.250	Yes	None
911259	12MM	1.750	B&S	12MM	1.250		11.000	16.000	5.000	Yes	None
32339	12MM	1.750	B&S	12MM	1.437		13.375	21.750c	8.375	Yes	None
37162	12MM	1.750	B&S	12MM	1.437		13.750	21.750c	8.000	Yes	None
911162	12MM	1.750	B&S	12MM	1.437		13.750	21.750c	8.000	Yes	None
911523	12MM	1.750	B&S	12MM	1.437		14.125	21.750	7.625	Yes	None
911260	12MM	1.750	B&S	12MM	1.687		15.250	24.000	8.750	Yes	None
37234	12MM	1.750	B&S	12MM	1.750		13.750	22.375c	8.625	Yes	None
37233	12MM	1.750	CROSS	C	.3125	2.875	14.375	22.750	8.375	Yes	None
37232	12MM	1.750	CROSS	C	.3125	2.875	14.500	23.750	9.250	Yes	None
911248	12MM	1.750	STEM	.375-24			12.125	19.000	6.875	Yes	None
911278	12MM	1.875	B&S	.500	1.500		15.125	24.250	9.125	Yes	None
32311	12MM	1.875	LOOP	.625	1.312		9.875	14.750c	4.875	Yes	None
5930	12MM	2.125	B&S	12MM	2.125		11.875c	18.375	6.500	Yes	None
33126	12MM	2.125	B&S	12MM	2.125		11.875	18.375c	6.500	Yes	None
40204	12MM	2.125	B&S	12MM	2.125		12.125	18.375	6.250	Yes	None
40205	12MM	2.125	B&S	12MM	2.125		12.125	18.375	6.250	Yes	None
5978	12MM	2.125	B&S	18MM	2.000		12.125	19.125c	7.000	Yes	None
5979	12MM	2.125	B&S	18MM	2.000		12.125	19.125c	7.000	Yes	None
5877	12MM	2.312	B&S	12MM	1.250		10.375	15.875	5.500	Yes	None
33090	12MM	2.312	B&S	12MM	1.250		10.375	15.875	5.500	Yes	None
5989	12MM	2.312	B&S	12MM	1.625		11.750	18.125c	6.375	Yes	None
5956	12MM	2.312	B&S	12MM	2.312		10.500	15.875c	5.375	Yes	None

911274	14MM	1.875	B&S	14MM	1.875	10.250	14.750	4.500	Yes	None
37198	18MM	1.625	SPECIAL(?)			13.625	22.000	8.375		Yes/17110331

## CROSS PIN MOUNTING

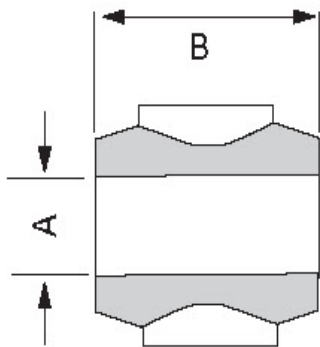


### CROSS PIN MOUNTING UPPER MOUNT

Part #	Style	A	B	Lower Mount		Compressed	Extended	travel	Dust Sh.	Parts pack
33059	C	.312	2.500	STUD_PLATE		9.500	14.250c	4.750	No	P423
5817	C	.3125	2.875	B&S	.4375 1.875	12.125	19.125c	7.000	Yes	None
911517	C	.3125	2.875	B&S	.562 1.625	13.125	14.750	1.625	Yes	None
550053	C	.3125	2.875	B&S	.562 1.625	13.625	21.875c	8.250	Yes	None
550015	C	.3125	2.875	B&S	.562 1.625	13.875	22.375c	8.500	Yes	None
37085	C	.3125	2.875	B&S	.562 1.625	14.000	22.375c	8.375	Yes	None
555009	C	.3125	2.875	B&S	.562 1.625	14.000	22.375	8.375	Yes	None
911021	C	.3125	2.875	B&S	.562 1.625	14.500	24.000	9.500	Yes	None
37086	C	.3125	2.875	B&S	.562 1.625	14.625	23.750c	9.125	Yes	None
911526	C	.3125	2.875	B&S	.562 1.625	14.750	23.750	9.000	Yes	None
37087	C	.3125	2.875	B&S	.562 1.625	15.375	25.250c	9.875	Yes	None
58609	C	.3125	2.875	B&S	.562 1.625	15.375	25.250c	9.875	60#	None
911512	C	.3125	2.875	B&S	.562 1.625	16.000	25.625	9.625	Yes	None
37044	C	.3125	2.875	B&S	.562 1.625	16.125	26.750c	10.625	Yes	None
32225	C	.3125	2.875	B&S	.562 1.625	16.375	26.750c	10.375	Yes	None
37035	C	.3125	2.875	B&S	12MM 1.500	15.000	25.125	10.125	Yes	P941
40006	C	.3125	2.875	B&S	12MM 1.500	15.000	24.000	9.000	Yes	None
40007	C	.3125	2.875	B&S	12MM 1.500	15.000	24.000	9.000	Yes	None
32393	C	.3125	2.875	B&S	12MM 1.500	15.250	25.125	9.875	Yes	None
32395	C	.3125	2.875	B&S	12MM 1.500	16.875	28.250	11.375	Yes	None
5931	C	.3125	2.875	LOOP	.312 1.375	18.875	21.250	2.375	Yes	P436

5802	C	.3125	2.875	LOOP/.625/1.312 OR PIN .5/1.312	12.750	20.875	8.125	Yes	P576
5955	C	.3125	2.875	LOOP/.625/1.312 OR PIN/.5/1.312	13.125	21.250c	8.125	Yes	P576
5966	C	.3125	2.875	LOOP/.625/1.312 OR PIN/.5/1.312	13.125	21.250c	8.125	Yes	P576/P941
5820	C	.3125	2.875	LOOP/.625/1.312 OR PIN/.5/1.312	14.125	24.000	9.875	Yes	P576
33050	C	.3125	2.875	LOOP/.625/1.312 OR PIN/.5/1.312	14.125	23.875	9.750	Yes	P576
5766	C	.3125	2.875	LOOP .625 1.312	12.875	21.125	8.250	Yes	None
550013	C	.3125	2.875	LOOP .625 1.312	13.250	21.250c	8.000	Yes	P576/P941
550052	C	.3125	2.875	LOOP .625 1.312	13.375	21.250c	7.875	Yes	P576/P941
33135	C	.3125	2.875	LOOP/.625/1.312 OR PIN/.500/1.312	13.125	21.250c	8.125	Yes	P567/P941
5921	C	.3125	2.875	STEM .375-16	8.750	12.375c	3.625	Yes	None
33102	C	.3125	2.875	STEM .375-16	8.750	12.375c	3.625	Yes	None
5771	C	.3125	2.875	STEM .375-16	10.375	16.625	6.250	Yes	P1134
5831	C	.3125	2.875	STEM .375-16	12.250	20.500	8.250	Yes	P1137
34767	C	.3125	2.875	STEM .375-16	15.250	25.250c	10.000	Yes	None
5914	C	12MM	2.937	B&S 12MM 1.750	12.750c	17.500	4.750	Yes	None
911515	O	.312	2.375	B&S .500 1.625	16.000	25.250	9.250	Yes	None
5777	O	.312	2.750	B&S 12MM 1.625	13.875	22.375	8.500	Yes	None
32215	O	.312	3.000	B&S .500 1.625	13.750	22.750	9.000	Yes	None
37067	O	.312	3.000	B&S .500 1.625	14.625	23.500	8.875	Yes	None
37069	O	.312	3.000	B&S .500 1.625	15.625	26.250	10.625	Yes	None
37190	O	.312	3.625	B&S .500 1.500	10.625	15.750c	5.125	No	None
32306	O	.375	3.187	B&S .500 1.375	12.500	19.625c	7.125	Yes	None
37135	O	.375	3.187	B&S .500 1.375	12.500	19.625c	7.125	Yes	None
37027	O	.375	3.187	LOOP .625 1.312	12.750	20.000c	7.250	Yes	None
550054	O	.375	3.187	LOOP .625 1.312	12.750	20.250c	7.500	Yes	None
550017	O	.375	3.187	LOOP .625 1.312	17.750	20.125c	2.375	Yes	None

## LOOP MOUNTING



**LOOP (NO SLEEVE or BUSHING) UPPER MOUNT**

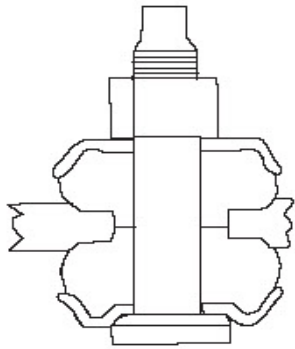
Part #	A	B	Lower Mount			Compressed	Extended	travel	Dust Sh.		Parts pack
33121	.312	1.375	LOOP	.625	1.312	9.375	14.375	5.000	Yes	None	
5850	.312	1.375	LOOP	.625	1.312	9.500		14.000	4.500	Yes	None
32361	.625	1.312	B&S	.500	1.312	10.625	16.000	5.375	Yes	P19	
37121	.625	1.312	B&S	.500	1.500	11.875	18.375	6.500	Yes	None	
555014	.625	1.312	B&S	.500	1.625	15.000	23.375d	8.375	Yes	None	
555015	.625	1.312	B&S	.500	1.625	15.000	23.375d	8.375	Yes	None	
555046	.625	1.312	B&S	.562	1.625	13.750c	19.250c	5.500	Yes	P19	
32314	.625	1.312	B&S	.625	1.500	12.000	19.625	7.625	Yes	None	
32389	.625	1.312	B&S	.625	1.500	13.375	20.750c	7.375	Yes	None	
37082	.625	1.312	B&S	12MM	1.437	13.625	21.500c	7.875	Yes	None	
911525	.625	1.312	B&S	12MM	1.437	13.875	21.500	7.625	Yes	None	
33033	.625	1.312	B&S	12MM	1.500	10.125	14.625	4.500	Yes	P19	
37051	.625	1.312	B&S	12MM	1.500	12.000	18.125c	6.125	Yes	None	
32360	.625	1.312	B&S	12MM	1.500	12.750	20.375	7.625	Yes	None	
37037	.625	1.312	B&S	12MM	1.500	13.500	21.750	8.250	Yes	None	
32372	.625	1.312	B&S	12MM	1.500	13.875	22.250c	8.375	No	None	
32394	.625	1.312	B&S	12MM	1.500	13.875	21.875c	8.000	Yes	None	
32358	.625	1.312	B&S	12MM	1.500	14.250	22.875c	8.625	Yes	None	
911013	.625	1.312	B&S	12MM	1.500	14.250	23.000	8.750	Yes	P827	
37052	.625	1.312	B&S	12MM	1.500	14.375	23.000	8.625	Yes	None	
37038	.625	1.312	B&S	12MM	1.500	15.000	24.750	9.750	Yes	None	
37039	.625	1.312	B&S	12MM	1.500	15.875	26.375	10.500	Yes	None	
32386	.625	1.312	B&S	12MM	1.500	16.000	26.375	10.375	Yes	None	
911014	.625	1.312	B&S	12MM	1.500	16.000	26.375	10.375	Yes	P827	
911265	.625	1.312	B&S	12MM	1.500	16.250	27.000	10.750	Yes	None	
32357	.625	1.312	B&S	12MM	1.500	16.625	28.250	11.625	Yes	None	
911267	.625	1.312	B&S	12MM	1.500	17.625	29.625	12.000	Yes	None	
32359	.625	1.312	B&S	12MM	1.500	18.250	31.000	12.750	Yes	None	
911268	.625	1.312	B&S	12MM	1.500	18.500	31.375	12.875	Yes	None	
5760	.625	1.312	LOOP	.312	1.375	14.625	24.875	10.250	Yes	None	
5752	.625	1.312	LOOP	.625	1.312	8.625	12.750	4.125	Yes	None	
555002	.625	1.312	LOOP	.625	1.312	8.625	12.750	4.125	Yes	P1221	
555003	.625	1.312	LOOP	.625	1.312	9.625	14.750	5.125	Yes	P1221	
555004	.625	1.312	LOOP	.625	1.312	11.250	17.875	6.625	Yes	P1221	
37098	.625	1.312	LOOP	.625	1.312	11.750	18.250	6.500	Yes	None	
555005	.625	1.312	LOOP	.625	1.312	12.000	19.500	7.500	Yes	P1221	
37112	.625	1.312	LOOP	.625	1.312	12.375	19.000c	6.625	Yes	None	
32377	.625	1.312	LOOP	.625	1.312	12.625	19.750	7.125	Yes	None	
37078	.625	1.312	LOOP	.625	1.312	12.625	20.000	7.375	Yes	None	



37073	.625	1.312	LOOP	.625	1.312		13.000	20.750	7.750	Yes	None
911530	.625	1.312	LOOP	.625	1.312		13.000	20.750	7.750	Yes	None
555006	.625	1.312	LOOP	.625	1.312		13.375	22.250	8.875	Yes	P1221
911029	.625	1.312	LOOP	.625	1.312		14.250	23.000	8.750	Yes	None
37029	.625	1.312	LOOP	.625	1.312		14.375	23.000	8.625	Yes	None
37101	.625	1.312	LOOP	.625	1.312		15.125	24.875	9.750	Yes	None
32370	.625	1.312	LOOP	.625	1.312		16.250	27.250	11.000	Yes	None
555949	.625	1.312	LOOP	.625	1.312		17.125	29.375	12.250	Yes	Two/P576
37074	.625	1.312	STEM	.375-16			12.125	19.250	7.125	Yes	P1137
5757	.625	1.312	LOOP/.625/1.312 OR PIN/.5/1.312				14.000	23.625	9.625	Yes	P572 P576
37188	.625	1.312	LOOP/.625/1.312 OR PIN/.5/1.312				14.000	23.625	9.625	Yes	P572 P576
555011	.6875	1.562	B&S	.500	1.625		14.625	24.125	9.500	Yes	None
5762	.6875	1.562	CROSS	C	.312	2.500	10.625	15.250c	4.625	No	None
5952	.6875	1.562	LOOP	.6875	1.562		12.125	19.125c	7.000	Yes	None
555012	.6875	1.562	LOOP	.6875	1.562		12.125	19.125	7.000	Yes	None
37045	.6875	1.562	LOOP	.6875	1.562		13.125	20.250c	7.125	Yes	None
37189	.6875	1.562	LOOP	.6875	1.562		15.250	25.625	10.375	Yes	None
555013	.6875	1.562	LOOP	.6875	1.562		16.000	27.000	11.000	Yes	None
37114	.75	1.562	LOOP	.75	1.562		12.875	19.500c	6.625	Yes	P575
37113	.75	1.562	LOOP	.75	1.562		13.250	20.375c	7.125	Yes	P575
66618	.75	1.562	LOOP	.75	1.562		13.375	21.500	8.125	Yes	P575
37032	.75	1.562	LOOP	.75	1.562		13.875	21.500c	7.625	Yes	P575
32309	.75	1.562	LOOP	14MM	1.562		13.375	21.250c	7.875	Yes	P867
37075	.75	1.562	LOOP	14MM	1.562		13.625	21.250c	7.625	Yes	P867
32308	.75	1.562	LOOP	14MM	1.562		14.750	23.625c	8.875	Yes	P867
37076	.75	1.562	LOOP	14MM	1.562		14.875	23.625c	8.750	Yes	P867
37192	.75	1.562	STEM	.375-24			13.625	21.750	8.125	Yes	P120/P171
65430	1.00	1.75	LOOP	1.00	1.75		13.375	19.375d	6.000	Yes	None
65464	1.00	1.75	LOOP	1.00	1.75		13.375	19.250d	5.875	Yes	None
65474	1.00	1.75	LOOP	1.00	1.75		13.625	20.000d	6.375	Yes	None
66957	1.00	1.75	LOOP	1.00	1.75		15.250	23.250d	8.000	Yes	None
65116	1.00	1.75	LOOP	1.00	1.75		15.375	24.250	8.875	Yes	None
557009	1.00	1.75	LOOP	1.00	1.75		15.500	23.750d	8.250	Yes	None
65448	1.00	1.75	LOOP	1.00	1.75		17.000	25.625d	8.625	Yes	None
65472	1.00	1.75	STEM	.625-11			15.125	23.125d	8.000	Yes	P1071/P1231
40209	14MM	1.562	LOOP	14MM	1.562		14.875	22.875	8.000	Yes	None
40210	14MM	1.562	LOOP	14MM	1.562		14.875	22.875	8.000	Yes	None
40031	14MM	1.562	LOOP	14MM	1.562		15.000	22.500	7.500	Yes	None
40032	14MM	1.562	LOOP	14MM	1.562		15.250	22.750	7.500	Yes	None
40034	14MM	1.562	LOOP	14MM	1.562		15.250	22.750	7.500	Yes	None
40042	14MM	1.562	LOOP	14MM	1.562		15.250	22.750	7.500	Yes	None
40045	14MM	1.562	LOOP	14MM	1.562		15.250	22.750	7.500	Yes	None

40036	14MM	1.562	LOOP	14MM	1.562	15.625	23.875	8.125	Yes	None
40039	14MM	1.562	LOOP	14MM	1.562	15.625	23.875	8.125	Yes	None
40040	14MM	1.562	LOOP	14MM	1.562	16.875	25.625	8.250	Yes	None
911508	14MM	1.562	LOOP	14MM	1.562	17.750	27.250	9.500	Yes	None
37049	M10		B&S	.500	1.312	10.000	14.625	4.625	Yes	P19
33084	M10		B&S	.562	1.625	14.125	22.875	8.750	Yes	P19
37041	M10		B&S	.562	1.625	14.125	22.875	8.750	Yes	P19
66637	M10		B&S	.750	1.750	14.125	23.000	8.875	Yes	P19

## STEM



### STEM UPPER MOUNT

Part #	Upper Mount	Lower Mount			Compressed	Extended	travel	Dust Sh.	Parts pack
5811	.375-16	B&S	.4375	1.437	8.000	12.250	4.250	No	P1134
33082	.375-16	B&S	.4375	3.312	8.625	13.375	4.750	No	P1134
5815	.375-16	B&S	.4375	3.312	8.750	13.250	4.500	No	P1134
37068	.375-16	B&S	.500	1.375	9.750	15.000	5.250	No	P1135
5773	.375-16	B&S	.500	1.375	10.125c	13.000c	2.875	No	P1135
37088	.375-16	B&S	.500	1.500	9.875	14.500c	4.625	Yes	P1135
58253	.375-16	B&S	.500	1.500	10.500	16.125c	5.625	40#	P1135
37053	.375-16	B&S	.500	1.500	10.750	15.875c	5.125	Yes	P1135
37089	.375-16	B&S	.500	1.500	12.250	19.625	7.375	Yes	P1134
32378	.375-16	B&S	.500	1.500	13.250	21.250c	8.000	Yes	P1135
40004	.375-16	B&S	.500	1.500	13.625	18.000	4.375	Yes	None
37120	.375-16	B&S	.500	1.500	14.500	24.375	9.875	Yes	P1135
5784	.375-16	B&S	.500	1.500	17.375	26.000	8.625	No	17110530
32304	.375-16	B&S	.500	1.625	9.875	14.250c	4.375	Yes	P1136
37133	.375-16	B&S	.500	1.625	10.000	14.375c	4.375	Yes	P1136
911520	.375-16	B&S	.500	1.625	10.000	14.500	4.500	Yes	P1136

5778	.375-16	B&S	.562	1.625	11.500	17.875	6.375	Yes	P1417
5950	.375-16	B&S	.562	1.625	11.875	19.125c	7.250	Yes	P1136
33132	.375-16	B&S	.562	1.625	11.875	19.125c	7.250	Yes	P1136
5965	.375-16	B&S	.562	1.625	14.500c	19.125c	4.625	Yes	P1136
33134	.375-16	B&S	.562	1.625	14.500c	19.125c	4.625	Yes	P1136
32337	.375-16	B&S	.562	1.500	11.625	18.625c	7.000	Yes	P1134
37160	.375-16	B&S	.562	1.500	11.875	18.500c	6.625	Yes	P1134
5939	.375-16	B&S	.625	1.6875	9.625	14.875c	5.250	Yes	P1134
32245	.375-16	B&S	.625	1.500	8.750	13.500	4.750	Yes	P1134
37030	.375-16	B&S	.625	1.500	9.250	13.625	4.375	Yes	P1134
911272	.375-16	B&S	.625	1.500	12.500	19.625	7.125	Yes	P1134
37217	.375-16	B&S	.625	1.562	15.250	25.125c	9.875	Yes	P1137
37237	.375-16	B&S	.625	1.562	17.375c	23.500c	6.125	Yes	P1136
37071	.375-16	B&S	10MM	1.625	15.875c	20.750c	4.875	Yes	P1278
5897	.375-16	B&S	10MM	1.625	16.125c	21.250	5.125	Yes	P1134
33108	.375-16	B&S	10MM	1.625	16.125c	21.250c	5.125	Yes	P1134
5769	.375-16	B&S	10MM	2.125	8.375	11.875c	3.500	Yes	P1134
32315	.375-16	B&S	12MM	1.125	13.000	21.500c	8.500	Yes	P1134
37231	.375-16	B&S	12MM	1.125	13.000	21.250c	8.250	Yes	P1134
37047	.375-16	B&S	12MM	1.250	8.125	12.125	4.000	Yes	P1137
911529	.375-16	B&S	12MM	1.250	8.125	12.125	4.000	Yes	P1137
32388	.375-16	B&S	12MM	1.250	8.750	13.375	4.625	Yes	P1134
37077	.375-16	B&S	12MM	1.250	8.875	13.750	4.875	Yes	P1134
911022	.375-16	B&S	12MM	1.250	9.500	14.250	4.750	Yes	P1134
32336	.375-16	B&S	12MM	1.250	9.625	15.000c	5.375	Yes	P1134
37022	.375-16	B&S	12MM	1.250	9.625	14.375	4.750	Yes	P1134
37100	.375-16	B&S	12MM	1.250	9.625	14.750	5.125	Yes	P1134
37159	.375-16	B&S	12MM	1.250	10.125	15.000c	4.875	Yes	P1134
37108	.375-16	B&S	12MM	1.250	10.375	15.250	4.875	Yes	P1134
37031	.375-16	B&S	12MM	1.250	10.500	16.375	5.875	Yes	P1134
911279	.375-16	B&S	12MM	1.250	12.750	20.375	7.625	Yes	P1134
5945	.375-16	B&S	12MM	1.250	13.000	21.375	8.375	Yes	P1137
33116	.375-16	B&S	12MM	1.250	13.000	21.375	8.375	Yes	P1137
37239	.375-16	B&S	12MM	1.250	13.125	21.500	8.375	Yes	P1134
5881	.375-16	B&S	12MM	1.250	13.625	21.125c	7.500	Yes	P1137
37238	.375-16	B&S	12MM	1.250	13.625	22.500	8.875	Yes	P1134
911238	.375-16	B&S	12MM	1.250	13.625	22.500	8.875	No	P1134
911280	.375-16	B&S	12MM	1.250	13.750	22.375	8.625	Yes	P1134
33272	.375-16	B&S	12MM	1.250	14.750c	20.875	6.125	Yes	P1137
32387	.375-16	B&S	12MM	1.500	9.250	14.750	5.500	Yes	P1135
37220	.375-16	B&S	12MM	1.500	9.750	14.750	5.000	No	P1135
911011	.375-16	B&S	12MM	1.500	9.875	14.500c	4.625	Yes	P1135

37034	.375-16	B&S	12MM	1.500		10.000	14.750c	4.750	Yes	P1135
37095	.375-16	B&S	12MM	1.500		10.125	14.625c	4.500	Yes	P1135
37118	.375-16	B&S	12MM	1.500		10.250	15.000c	4.750	Yes	P1135
37054	.375-16	B&S	12MM	1.500		10.500	15.875c	5.375	Yes	P1135
32316	.375-16	B&S	12MM	1.500		11.500	18.250c	6.750	Yes	P1134
32382	.375-16	B&S	12MM	1.500		11.500	18.500	7.000	Yes	P864/P1135
37070	.375-16	B&S	12MM	1.500		12.125	18.250c	6.125	Yes	P1134
5845	.375-16	B&S	12MM	1.500		12.250	20.125	7.875	Yes	P1136
37269	.375-16	B&S	12MM	1.500		12.375	19.750	7.375	Yes	P1134
550055	.375-16	B&S	12MM	1.500		12.375	20.125c	7.750	Yes	P1136/P1344
5783	.375-16	B&S	12MM	1.500		12.500	20.000	7.500	Yes	P1136/P1475
37080	.375-16	B&S	12MM	1.500		12.500	20.750c	8.250	Yes	P1135
550018	.375-16	B&S	12MM	1.500		12.500	20.000c	7.500	Yes	P1136/P1344
37117	.375-16	B&S	12MM	1.500		13.500	22.000	8.500	Yes	P1135
32303	.375-16	B&S	12MM	1.500		13.875	23.750	9.875	Yes	P1135
37132	.375-16	B&S	12MM	1.500		14.250	23.875	9.625	Yes	P1135
5968	.375-16	B&S	12MM	1.500		14.500c	19.125c	4.625	Yes	P1136
33137	.375-16	B&S	12MM	1.500		14.500c	19.125c	4.625	Yes	P1136
5861	.375-16	B&S	12MM	1.500		14.750	23.750	9.000	Yes	P1136
32305	.375-16	B&S	12MM	1.500		15.625	27.250	11.625	Yes	P1136
37134	.375-16	B&S	12MM	1.500		16.000	27.500	11.500	Yes	P1136
911521	.375-16	B&S	12MM	1.500		16.250	26.500	10.250	Yes	P1137
33130	.375-16	B&S	12MM	1.562		14.500c	21.750c	7.250	Yes	P1180
5774	.375-16	B&S	12MM	1.562		16.000c	21.000	5.000	Yes	P1137
5993	.375-16	B&S	12MM	1.687		12.500	21.250c	8.750	Yes	P1136
5994	.375-16	B&S	12MM	1.687		12.500	20.250c	7.750	Yes	P1136
5995	.375-16	B&S	12MM	1.687		12.500	20.250c	7.750	Yes	P1136
5942	.375-16	B&S	12MM	2.875		11.125	16.500c	5.375	Yes	P1134
911507	.375-16	B&S	14MM	1.312		12.500	15.500	3.000	Yes	P1136
5928	.375-16	B&S	18MM	2.000		14.375	24.000c	9.625	No	P1134
33125	.375-16	B&S	18MM	2.000		14.375	24.000	9.625	No	P1134
5821	.375-16	CROSS	C	.312	2.437	8.000	11.750c	3.750	No	P1134
37129	.375-16	CROSS	C	.312	2.437	8.375	12.250	3.875	No	P1134
911129	.375-16	CROSS	C	.312	2.437	8.375	12.125	3.750	No	P1134
37058	.375-16	CROSS	C	.312	2.437	8.500	12.375	3.875	No	P1134
5804	.375-16	CROSS	C	.312	2.437	8.625	13.375	4.750	No	P1134
5840	.375-16	CROSS	C	.312	2.437	8.750	13.250	4.500	No	P1134
911019	.375-16	CROSS	C	.312	2.437	9.000	13.250	4.250	No	P1134
911516	.375-16	CROSS	C	.312	2.437	9.000	13.375	4.375	No	P1136
5960	.375-16	CROSS	C	.312	2.437	9.125	13.750c	4.625	Yes	P1136
5969	.375-16	CROSS	C	.312	2.437	9.125	13.750c	4.625	Yes	P1136
32317	.375-16	CROSS	C	.312	2.437	9.125	13.750c	4.625	Yes	P1136

33127	.375-16	CROSS	C	.312	2.437	9.125	13.750c	4.625	Yes	P1136
550010	.375-16	CROSS	C	.312	2.437	9.375	13.750c	4.375	No	P1136
550012	.375-16	CROSS	C	.312	2.437	9.375	14.250	4.875	No	P1134
37177	.375-16	CROSS	C	.312	2.437	11.625	18.000c	6.375	Yes	P941/P1135
550016	.375-16	CROSS	C	.312	2.437	12.625	20.375c	7.750	Yes	P1136
37026	.375-16	CROSS	C	.312	2.437	12.875	20.375c	7.500	Yes	P1136
911026	.375-16	CROSS	C	.312	2.437	12.875	20.375c	7.500	Yes	P1136
32338	.375-16	CROSS	C	.312	2.437	13.000	21.125c	8.125	Yes	P941/P1136
37081	.375-16	CROSS	C	.312	2.437	13.000	20.750c	7.750	Yes	P1136
37161	.375-16	CROSS	C	.312	2.437	13.000	20.750c	7.750	Yes	P941/P1136
37083	.375-16	CROSS	C	.312	2.437	13.250	21.125c	7.875	Yes	P1136
37122	.375-16	CROSS	C	.312	2.437	13.625	18.000c	4.375	Yes	P941/P1135
32318	.375-16	CROSS	C	.312	2.500	8.500	13.000	4.500	No	P1135
37137	.375-16	CROSS	C	.312	2.500	8.500	13.000	4.500	No	P1135
5801	.375-16	CROSS	C	.312	2.500	9.250	14.375	5.125	No	P1134
33123	.375-16	CROSS	C	.312	2.500	9.250	14.625	5.375	No	P1134
37063	.375-16	CROSS	C	.312	2.500	9.250	14.000	4.750	No	P1134
911255	.375-16	CROSS	C	.312	2.500	9.250	12.875	3.625	Yes	P1135
5906	.375-16	CROSS	C	.312	2.500	9.375	14.625	5.250	No	P1134
32383	.375-16	CROSS	C	.312	2.500	9.375	14.500	5.125	Yes	P1134
37072	.375-16	CROSS	C	.312	2.500	9.375	14.500	5.125	Yes	P1134
37111	.375-16	CROSS	C	.312	2.500	9.375	14.500	5.125	No	P1134
37050	.375-16	CROSS	C	.312	2.500	9.500	13.750c	4.250	No	P1134
37125	.375-16	CROSS	C	.312	2.500	9.500	13.750c	4.250	No	P1134
32362	.375-16	CROSS	C	.312	2.500	9.625	14.000c	4.375	No	P1134
911513	.375-16	CROSS	C	.312	2.500	9.625	14.000	4.375	No	P1136
911257	.375-16	CROSS	C	.312	2.500	9.875	14.125	4.250	Yes	P1135
37060	.375-16	CROSS	C	.312	2.500	10.250	15.125c	4.875	Yes	P1135
911503	.375-16	CROSS	C	.312	2.500	10.250	14.625	4.375	Yes	P1136
32326	.375-16	CROSS	C	.312	2.500	10.375	14.375c	4.000	Yes	P1135
32330	.375-16	CROSS	C	.312	2.500	10.375	13.625c	3.250	Yes	P1135
37149	.375-16	CROSS	C	.312	2.500	10.375	14.375c	4.000	Yes	P1135
911149	.375-16	CROSS	C	.312	2.500	10.375	14.375c	4.000	Yes	P1135
37153	.375-16	CROSS	C	.312	2.500	10.500	13.500c	3.000	Yes	P1135
5938	.375-16	CROSS	C	.312	2.500	11.500c	15.000c	3.500	Yes	P1134
32346	.375-16	CROSS	C	.312	2.500	11.500	17.875c	6.375	Yes	P941/P1135
5936	.375-16	CROSS	C	.312	2.500	12.125	20.250	8.125	Yes	P941/P1136
33129	.375-16	CROSS	C	.312	2.500	12.125	20.375	8.250	Yes	P941/P1136
5892	.375-16	CROSS	C	.3125	2.875	10.500c	13.750c	3.250	Yes	P1134
33104	.375-16	CROSS	C	.3125	2.875	10.500c	13.875c	3.375	Yes	P1134
40005	.375-16	CROSS	C	.3125	2.875	13.500	18.000	4.500	Yes	None
37097	.375-16	CROSS	O	.312	2.187	8.750	13.375	4.625	No	P1134

5754	.375-16	CROSS O	.312	2.187	9.625	15.125	5.500	No	P1134
911522	.375-16	CROSS O	.312	2.187	13.250	20.500	7.250	Yes	P1138
911524	.375-16	CROSS O	.312	2.187	13.375	21.000	7.625	Yes	P11
37066	.375-16	CROSS O	.312	2.375	8.625	13.000	4.375	No	P1135
5879	.375-16	CROSS O	.312	2.750	11.125	16.750c	5.625	Yes	P1137
37093	.375-16	CROSS O	.312	3.000	8.875	13.250	4.375	No	P1135
37096	.375-16	CROSS O	.312	3.000	8.875	13.375	4.500	No	P1135
32371	.375-16	CROSS O	.312	3.000	9.250	13.625	4.375	No	P1135
34794	.375-16	CROSS O	.312	3.000	9.250	13.625	4.375	No	P1135
32376	.375-16	CROSS O	.312	3.000	10.000	15.500	5.500	No	P1135
5759	.375-16	CROSS O	.375	3.187	9.375	14.875	5.500	No	P1137
911518	.375-16	CROSS O	.375	3.187	13.000	18.500	5.500	Yes	P1136
5839	.375-16	LOOP/.625/1.312 OR PIN/.5/1.312			11.125	18.125	7.000	Yes	P576/P1134
5818	.375-16	LOOP/.625/1.312 OR PIN/.5/1.312			11.625	19.375	7.750	Yes	P576/P1134
33122	.375-16	LOOP/.625/1.312 OR PIN/.5/1.312			11.625	18.750c	7.125	Yes	P576/P1134
5867	.375-16	LOOP/.625/1.312 OR PIN/.5/1.312			11.750	19.000	7.250	Yes	P576/P1134
5961	.375-16	LOOP/.625/1.312 OR PIN/.5/1.312			12.125	20.000c	7.875	Yes	P576/P1136
5967	.375-16	LOOP/.625/1.312 OR PIN/.5/1.312			12.125	19.625c	7.500	Yes	P576/P1136
33128	.375-16	LOOP/.625/1.312 OR PIN/.5/1.312			12.125	19.500c	7.375	Yes	P576/P1136
33097	.375-16	LOOP/.625/1.312 OR PIN/.5/1.312			12.250	20.375	8.125	Yes	P576/P1136
5847	.375-16	LOOP/.625/1.312 OR PIN/.5/1.312			12.375	20.500	8.125	Yes	P576/P1136
5927	.375-16	LOOP/.625/1.312 OR PIN/.5/1.312			12.625	21.375	8.750	Yes	P576/P1137
33049	.375-16	LOOP/.625/1.312 OR PIN/.5/1.312			12.625	21.250	8.625	Yes	P576/P1134
33124	.375-16	LOOP/.625/1.312 OR PIN/.5/1.312			12.625	21.375	8.750	Yes	P576/P1137
5803	.375-16	LOOP/.625/1.312 OR PIN/.5/1.312			12.750	21.500	8.750	Yes	P576/P1134
37128	.375-16	LOOP	.625	1.312	9.375	14.250c	4.875	Yes	P1135
31029	.375-16	LOOP	.625	1.312	9.625	15.375	5.750	Yes	P1134
911015	.375-16	LOOP	.625	1.312	9.750	14.250c	4.500	Yes	P1135
37018	.375-16	LOOP	.625	1.312	10.000	15.500c	5.500	Yes	P1135
37116	.375-16	LOOP	.625	1.312	10.250	14.875c	4.625	Yes	P1135
5753	.375-16	LOOP	.625	1.312	10.375	16.750	6.375	Yes	P1134
32381	.375-16	LOOP	.625	1.312	11.500	18.375	6.875	Yes	P1135
37036	.375-16	LOOP	.625	1.312	11.625	18.375	6.750	Yes	P1135
5854	.375-16	LOOP	.625	1.312	12.125	20.000	7.875	Yes	P1134
550011	.375-16	LOOP	.625	1.312	12.375	20.000c	7.625	Yes	P576/P1136
550051	.375-16	LOOP	.625	1.312	12.375	20.000c	7.625	Yes	P576/P1136
37243	.375-16	LOOP	.625	1.312	13.000	21.500	8.500	Yes	P1137
37024	.375-16	LOOP	.625	1.312	13.375	21.875	8.500	Yes	P1134
911024	.375-16	LOOP	.625	1.312	13.375	22.000	8.625	Yes	P1134
5882	.375-16	LOOP	.625	1.312	13.625	21.125c	7.500	Yes	P1137
33107	.375-16	LOOP	.625	1.312	13.625	21.125c	7.500	Yes	P1137
555944	.375-16	LOOP	.625	1.312	13.750	23.375	9.625	Yes	P837/P1098

5870	.375-16	LOOP	.625	1.312	14.250	23.875	9.625	Yes	P1137
37199	.375-16	LOOP	.625	1.312	14.375	24.250c	9.875	Yes	P1137
33136	.375-16	LOOP/.625/1.312 OR PIN/.500/1.312			12.125	19.500c	7.375	Yes	P576/P1136
5761	.375-16	LOOP	.6875	1.562	11.750	19.000	7.250	Yes	P1135
5772	.375-16	LOOP	.6875	1.562	12.625	20.750	8.125	Yes	P1135
32334	.375-16	LOOP	.75	1.562	12.375	20.000c	7.625	Yes	P81 P1134
37157	.375-16	LOOP	.75	1.562	12.500	20.000c	7.500	Yes	P81 P1134
37033	.375-16	LOOP	.75	1.562	13.250	20.875c	7.625	Yes	P81 P1134
66717	.375-16	LOOP	.75	1.562	14.250	23.375	9.125	Yes	P120/P936
34788	.375-16	LOOP	.75	1.562	14.375	23.250c	8.875	Yes	P120/P1135
32369	.375-16	LOOP	.75	1.562	14.500	23.250c	8.750	Yes	P120/P1135
911263	.375-16	LOOP	14MM	1.562	14.000	20.875	6.875	Yes	P1136
32324	.375-16	LOOP	14MM	1.562	14.250	23.875	9.625	Yes	P1135
37147	.375-16	LOOP	14MM	1.562	14.250	23.875	9.625	Yes	P1135
911264	.375-16	LOOP	14MM	1.562	15.000	23.375	8.375	Yes	P1136
32325	.375-16	LOOP	14MM	1.562	16.125	27.375	11.250	Yes	P1136
37148	.375-16	LOOP	14MM	1.562	16.125	27.375	11.250	Yes	P1136
5896	.375-16	STEM	.375-16		13.125	22.125	9.000	Yes	P1134
5900	.375-16	STEM	.375-16		13.875	23.750	9.875	Yes	P1137
5983	.375-16	STEM	.5-13		13.750	21.750c	8.000	Yes	P1136
5829	.375-16	STEM	.375-16		7.125	10.750	3.625	No	TwoP1135
555001	.375-16	STEM	.375-16		7.875	11.875c	4.000	Yes	TwoP1134
5751	.375-16	STEM	.375-16		8.500	13.750	5.250	No	TwoP1134
555025	.375-16	STEM	.375-16		8.625	13.500c	4.875	Yes	TwoP1134
5819	.375-16	STEM	.375-16		9.250	14.125c	4.875	Yes	TwoP1134
5758	.375-16	STEM	.375-16		9.375	14.625c	5.250	No	TwoP1134
5826	.375-16	STEM	.375-16		10.125	16.375	6.250	Yes	TwoP1134
555043	.375-16	STEM	.375-16		12.500	20.875	8.375	Yes	TwoP1134
37186	.375-16	STEM	.375-16		14.000	24.250	10.250	Yes	TwoP1134
32368	.375-16	STEM	.375-16		14.250	23.250c	9.000	Yes	TwoP1135
5770	.375-16	STEM	.375-24		13.875c	20.625c	6.750	Yes	P1134
32328	.375-16	SPECIAL(?)			10.375	15.000c	4.625	Yes	P1135
37178	.375-16	SPECIAL(?)			10.750	15.375c	4.625	Yes	P1135
32347	.375-16	SPECIAL(?)			10.875	15.375c	4.500	Yes	P1135
911256	.375-16	SPECIAL(?)			10.875	15.125	4.250	Yes	P1136
911501	.375-16	SPECIAL(?)			10.875	15.375	4.500	Yes	P1136
911505	.375-16	SPECIAL(?)			10.875	15.375	4.500	Yes	P1136
37151	.375-16	SPECIAL(?)			11.000	15.125c	4.125	Yes	P1135
5970	.375-16	SPECIAL(?)			11.375	18.625c	7.250	Yes	P1180/P1181
5971	.375-16	SPECIAL(?)			15.000c	21.000	6.000	Yes	P864/P1136
32299	.375-16	SPECIAL(?)			15.000c	21.000	6.000	Yes	P864/P1136

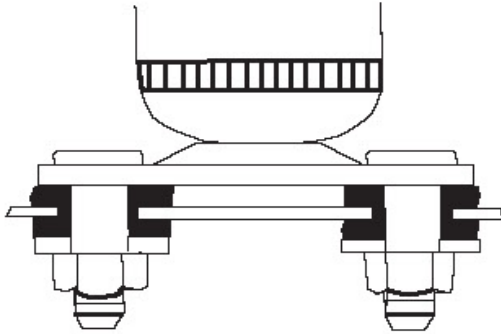
5823	.375-16	STUD_PLATE			8.625	12.625c	4.000	No	P423/P1137	
5809	.375-16	STUD_PLATE			9.000	13.625c	4.625	No	P423	P1136
33053	.375-16	STUD_PLATE			9.125	13.625c	4.500	No	P423	P1136
5756	.375-16	STUD_PLATE			10.000	15.500c	5.500	No	P423	P1137
5763	.375-24	B&S	.500	1.375	9.875	14.750c	4.875	No	P2	
37200	.375-24	STEM	.375-24	11.250	17.375	6.125	Yes	None		
37191	.375-24	STEM	.375-24	13.000	21.625	8.625	Yes	Two	P171	
34822	.375-24	STEM	.375-24	13.875	22.750	8.875	Yes	None		
555010	.5-13	B&S	.4375	1.437	13.500	22.125	8.625	Yes	P1167	
34504	.5-13	B&S	.500	1.375	10.375	15.125c	4.750	Yes	P1167	
550003	.5-13	B&S	.500	1.500	10.625	16.000c	5.375	No	P1167	
555033	.5-13	B&S	.500	1.500	10.625	16.000c	5.375	No	P1167	
555020	.5-13	B&S	.500	1.500	13.500	22.500	9.000	Yes	P1167	
550004	.5-13	B&S	.500	1.500	13.625	22.500	8.875	Yes	P1167	
555034	.5-13	B&S	.500	1.500	13.625	22.500	8.875	Yes	P1167	
557034	.5-13	B&S	.500	1.625	14.500	22.875d	8.375	Yes	P1167	
557035	.5-13	B&S	.500	1.625	14.500	22.875d	8.375	Yes	P1167	
37102	.5-13	B&S	.562	1.625	9.500	13.750c	4.250	Yes	P1167	
32392	.5-13	B&S	.562	1.625	10.750	15.875c	5.125	Yes	P1167	
37208	.5-13	B&S	.562	1.625	10.750	15.875c	5.125	Yes	P1167	
911266	.5-13	B&S	.562	1.625	13.625	20.750	7.125	Yes	P1167	
37104	.5-13	B&S	.562	1.625	14.000	21.750d	7.750	Yes	P1167	
32366	.5-13	B&S	.562	1.625	14.250	22.250d	8.000	Yes	P1167	
32402	.5-13	B&S	.562	1.625	14.500	22.750	8.250	Yes	P1167	
553001	.5-13	B&S	.625	2.000	13.875	17.000	3.125	Yes	P1365	
911270	.5-13	B&S	.750	1.750	14.000	22.250	8.250	Yes	P1167/P1336	
37240	.5-13	B&S	.750	1.750	14.875	24.000c	9.125	Yes	P1167/P1336	
550002	.5-13	B&S	12MM	1.500	13.250	22.000	8.750	Yes	P1167	
555032	.5-13	B&S	12MM	1.500	13.250	22.000	8.750	Yes	P1167	
911282	.5-13	B&S	12MM	1.750	11.000	15.375	4.375	Yes	None	
32350	.5-13	B&S	14MM	1.312	10.250	15.125c	4.875	Yes	P1167	
37181	.5-13	B&S	14MM	1.312	10.250	15.125c	4.875	Yes	P1167	
32302	.5-13	CROSS	C	.312	2.500	10.250	15.000c	4.750	Yes	P1167
32340	.5-13	CROSS	C	.312	2.500	10.250	15.000c	4.750	Yes	P1167
37131	.5-13	CROSS	C	.312	2.500	10.250	14.875c	4.625	Yes	P1167
37163	.5-13	CROSS	C	.312	2.500	10.250	15.000c	4.750	Yes	P1167
550009	.5-13	CROSS	O	.312	3.000	9.125	13.875	4.750	No	P1167
555039	.5-13	CROSS	O	.312	3.000	9.125	13.875	4.750	No	P1167
550007	.5-13	CROSS	O	.312	3.000	10.125	15.625	5.500	No	P1167
555037	.5-13	CROSS	O	.312	3.000	10.125	15.625	5.500	No	P1167
32390	.5-13	CROSS	O	.375	3.187	9.875	14.250c	4.375	Yes	P1167
37206	.5-13	CROSS	O	.375	3.187	9.875	14.250c	4.375	Yes	P1167



32400	.5-13	CROSS	O	.375	3.187	11.000	16.375	5.375	Yes P1167	
550001	.5-13	LOOP	.625	1.312	10.000	14.875c	4.875	Yes	P1167	
555031	.5-13	LOOP	.625	1.312	10.000	14.875c	4.875	Yes	P1167	
32356	.5-13	LOOP	.625	1.312	10.125	15.000c	4.875	Yes	P1167	
5787	.5-13	SPECIAL(?)			15.000	21.500	6.500	No	None	
5788	.5-13	SPECIAL(?)			15.000	21.500	6.500	No	None	
40018	.625-11	B&S	14MM	2.4375	13.500	18.375	4.875	Yes	None	
5997	.625-11	LOOP	14MM	1.562	13.375	20.250	6.875	Yes	None	
911527	.625-11	SPECIAL(?)			11.125	15.375	4.250	Yes	P1136	
557033	.625-11	STEM	.625-11		11.250	16.500	5.250	Yes	P1071	P1231
39040	M12	B&S	12MM	2.875	11.125	17.000	5.875	Yes	None	
39051	M12	SPECIAL(?)			14.750	18.625	3.875	No	None	
39004	M10	B&S	.4375	1.250	11.875	18.250c	6.375	Yes	P46	
37146	M10	B&S	.500	1.687	15.875	23.375c	7.500	No	P906	
5992	M10	B&S	.562	2.4375	15.375	24.500c	9.125	No	17110507	
5984	M10	B&S	10MM	1.625	16.500	25.750	9.250	No	17110497	
5996	M10	B&S	10MM	1.625	16.875	25.125	8.250	No	17110497	
39100	M10	B&S	10MM	2.000	16.375	24.125c	7.750	No	None	
39052	M10	B&S	10MM	2.375	15.000	24.000	9.000	No	17110495	
39102	M10	B&S	10MM	2.375	15.000	24.000	9.000	No	17110495	
5987	M10	B&S	12MM	1.500	16.000	26.250c10.250	No	17110615		
5980	M10	B&S	12MM	1.562	14.000c	21.000c	7.000	Yes	17110409	
5982	M10	B&S	12MM	1.562	14.000c	21.500c	7.500	Yes	17110409	
5981	M10	B&S	12MM	1.562	14.375	23.625c	9.250	No	17110294	
5988	M10	B&S	12MM	1.562	14.375	24.125c	9.750	No	17110294	
5998	M10	B&S	12MM	1.562	14.625	23.500	8.875	No	17110294	
39012	M10	B&S	12MM	1.562	17.625c	22.250c	4.625	Yes	P1019	
5947	M10	B&S	12MM	1.687	14.375c	21.750c	7.375	Yes	P1180	
5974	M10	B&S	12MM	1.687	15.125	24.000c	8.875	Yes	17110294	
5977	M10	B&S	12MM	2.000	11.625	17.750	6.125	Yes	P260	
39011	M10	B&S	12MM	2.000	11.625	17.875	6.250	Yes	P260	
5999	M10	B&S	12MM	2.000	13.750	21.000	7.250	Yes	None	
40035	M10	B&S	14MM	1.312	10.875	15.375	4.500	Yes	None	
5786	M10	B&S	14MM	2.4375	15.625	27.000	11.375	Yes	P01479	
39007	M10	B&S	21MM	1.937	10.000	14.250c	4.250	No	P991	
40037	M10	CROSS	C	.312/2.500	10.375	14.500	4.125	Yes	None	
39006	M10	CROSS	C	.375/2.750	11.250	17.500	6.250	No	P341	
39026	M10	CROSS	C	.375/2.750	11.250	17.500	6.250	No	17110076	
40023	M10	CROSS	C	.375/2.750	12.000	16.000	4.000	No	None	
40024	M10	CROSS	C	.375/2.750	12.000	16.000	4.000	No	None	
5976	M10	LOOP	.625	1.312		10.250	14.250c	4.000	Yes 17110012	
39024	M10	LOOP	.625	1.312		10.250	14.125c	3.875	Yes P260	

5975	M10	LOOP	14MM	1.562	10.500	17.000	6.500	Yes	17110308
5776	M10	LSTEM	.5-13	13.125	22.000	8.875	Yes	None	
5991	M10	LSTEM	.5-13	13.250	21.875c	8.625	Yes	17110404	
39028	M10	SPECIAL(?)			9.875	14.000	4.125	Yes	17110453
40033	M10	SPECIAL(?)			11.000	15.375	4.375	Yes	None
40038	M10	SPECIAL(?)			11.000	15.375	4.375	Yes	None
40041	M10	SPECIAL(?)			11.000	15.375	4.375	Yes	None
40043	M10	SPECIAL(?)			11.000	15.375	4.375	Yes	None
40044	M10	SPECIAL(?)			11.000	15.375	4.375	Yes	None
39032	M10	SPECIAL(?)			11.250	17.500	6.250	No	P341
40025	M10	SPECIAL(?)			12.250	15.750	3.500	No	None
40026	M10	SPECIAL(?)			12.250	15.750	3.500	No	None
39002	M10	SPECIAL(?)			13.625c	18.375	4.750	Yes	P341
39030	M10	SPECIAL(?)			14.000c	19.125	5.125	Yes	P609
553002	M10	SPECIAL(?)			14.375	21.375	7.000	No	P1362
39016	M10	SPECIAL(?)			14.500c	17.250c	2.750	Yes	17110450
5990	M10	SPECIAL(?)			14.625	21.125c	6.500	No	P1101
39005	M10	SPECIAL(?)			14.750c	17.250c	2.500	Yes	P990
40211	M10	SPECIAL(?)			18.250	24.375	6.125	Yes	None
39041	M10	STEM	.625-11		14.625	19.625	5.000	Yes	17110326
39043	M10	STEM	.625-11		14.625	19.625	5.000	Yes	17110322
39019	M10	STEM	.625-11		14.750c	17.750c	3.000	Yes	17110326
39001	M10	STEM	.625-11		15.125c	20.000	4.875	Yes	17110326
39033	M10	STEM	.625-11		15.125	20.000	4.875	Yes	17110326
39014	M10	STEM	.625-11		15.375c	19.750	4.375	Yes	17110326
39045	M10	STEM	.625-11		16.500	18.250	1.750	Yes	17110322
39013	M10	STEM	.625-11		17.125c	20.875	3.750	Yes	17110322
39042	M10	STEM	.625-11		17.625	18.875	1.250	Yes	17110322
39044	M10	STEM	.625-11		17.750	18.875	1.125	Yes	17110322
39046	M10	STEM	.625-11		17.750	19.125	1.375	Yes	17110322
39018	M10	STEM	.625-11		18.125	19.500	1.375	Yes	17110322
39050	M10	STEM	.625-11		18.375	22.500	4.125	Yes	17110326
39021	M10	STEM	.625-11		18.500c	18.875c	0.375	Yes	17110326
39047	M10	STEM	.625-11		18.875	22.500	3.625	Yes	17110326
39020	M10	STEM	.625-11		19.000c	19.875c	0.875	Yes	17110326

## STUD PLATE



### STUD PLATE UPPER MOUNT

Part #	Upper Mount	Lower Mount				Compressed	Extended	travel	Dust Sh.	Parts pack
40029	STUD_PLATE	CROSS	C	.375	2.750	16.500	25.625	9.125	Yes	None
40030	STUD_PLATE	CROSS	C	.375	2.750	16.500	25.625	9.125	Yes	None

### SPECIAL UPPER MOUNT – IF IT ISN'T LIKE ANY OF THE ABOVE AND YOU'VE GOT SOME ODD

Part #	Upper Mount	Lower Mount				Compressed	Extended	travel	Dust Sh.	Parts pack
37197	SPECIAL(?)	SPECIAL(?)				12.875	21.500	8.625	Yes	17110046
5768	SPECIAL(?)	SPECIAL(?)				15.125	24.125	9.000	No	None
911528	SPECIAL(?)	B&S/.562/1.625				15.375	24.000	8.625	Yes	None
5985	SPECIAL(?)	B&S/12MM/1.437				16.750	25.000c	8.250	No	17110530
39101	SPECIAL(?)	B&S/12MM/1.875				19.000c	20.500c	1.500	Yes	None
39027	SPECIAL(?)	B&S/12MM/2.000				17.125c	19.750c	2.625	Yes	None
5765	SPECIAL(?)	CROSS/O/.312/2.750				10.125	15.500	5.375	No	P2
37195	SPECIAL(?)	SPECIAL(?)				8.375	11.375	3.000	Yes	17110284
37196	SPECIAL(?)	SPECIAL(?)				8.875	12.375	3.500	Yes	17110286
40207	SPECIAL(?)	SPECIAL(?)				12.375	19.000	6.625	Yes	None
40208	SPECIAL(?)	SPECIAL(?)				12.375	19.000	6.625	Yes	None
40206	SPECIAL(?)	SPECIAL(?)				12.500	19.250	6.750	Yes	None
40008	SPECIAL(?)	SPECIAL(?)				13.750	17.250	3.500	No	None
40009	SPECIAL(?)	SPECIAL(?)				13.750	17.250	3.500	No	None
40012	SPECIAL(?)	SPECIAL(?)				14.250	17.750	3.500	No	None
40013	SPECIAL(?)	SPECIAL(?)				14.250	17.750	3.500	No	None
40010	SPECIAL(?)	SPECIAL(?)				15.000	17.750	2.750	Yes	None
40011	SPECIAL(?)	SPECIAL(?)				15.000	17.750	2.750	Yes	None
40014	SPECIAL(?)	SPECIAL(?)				15.500	22.000	6.500	No	None
40015	SPECIAL(?)	SPECIAL(?)				15.500	22.000	6.500	No	None

## AIR SHOCKS

Part #	Upper Mount	Lower Mount	Compressed	Extended	travel	Dust Sh.	Parts pack
MA826	B&S/.4375/1.250	B&S/14MM/1.312	11.000	16.000	5.000	None	None
MA746	B&S/.500/1.500	B&S/.500/1.625	13.125c	21.000	7.875	None	P185
MA757	B&S/.500/1.625	LOOP/.6875/1.562	13.875c	22.500	8.625	None	None
MA733	B&S/.500/1.625	LOOP/.6875/1.562	15.500c	26.250	10.750	None	None
MA750	B&S/.500/1.625	STEM/.375-16	11.625c	18.875	7.250	None	P1134
MA817	B&S/.500/1.687	B&S/.500/1.687	12.750c	20.875	8.125	None	P185/P188
MA784	B&S/10MM/1.625	B&S/10MM/1.625	13.375c	21.500c	8.125	L/R	None
MA813	B&S/10MM/1.625	B&S/10MM/1.625	14.125c	22.875c	8.750	None	None
MA803	B&S/12MM/1.250	B&S/12MM/1.875	10.500	16.125c	5.625	L/R	None
MA824	B&S/12MM/1.500	B&S/12MM/1.500	12.750c	20.125c	7.375	None	None
MA768	B&S/12MM/1.625	B&S/12MM/1.500	12.000c	18.500	6.500	None	None
MA758	B&S/12MM/1.687	B&S/12MM/1.687	14.125c	23.000	8.875	None	None
MA814	B&S/12MM/2.125	B&S/12MM/2.125	12.000c	18.375c	6.375	None	None
MA791	B&S/18MM/2.000	B&S/12MM/1.625	15.125c	22.375c	7.250	L/R	None
MA778	CROSS/C/.312/2.500	B&S/.562/1.625	13.875c	22.875c	9.000	None	None
MA780	CROSS/C/.3125/2.875	B&S/.4375/1.625	13.375c	21.500	8.125	L/R	None
MA779	CROSS/C/.3125/2.875	B&S/.562/1.625	14.500c	23.750c	9.250	None	None
MA759	CROSS/C/.3125/2.875	B&S/.562/1.625	14.625c	24.000c	9.375	None	None
MA764	CROSS/C/.3125/2.875	B&S/.562/1.625	15.875c	27.125	11.250	None	None
MA776	CROSS/C/.3125/2.875	B&S/12MM/1.500	15.000	24.375c	9.375	L/R	P941
MA706	CROSS/C/.3125/2.875	LOOP/.312_1.375	13.000c	21.375	8.375	None	P414
MA717	CROSS/C/.3125/2.875	LOOP/.625/1.312 OR PIN/.5/1.312	12.750c	20.875	8.125	L/R	P576
MA751	CROSS/C/.3125/2.875	LOOP/.625/1.312 OR PIN/.5/1.312	13.000c	20.625	7.625	L/R	P576
MA819	CROSS/C/.3125/2.875	LOOP/.625/1.312 OR PIN/.5/1.312	13.375c	21.250c	7.875	L/R	P576
MA719	CROSS/C/.3125/2.875	LOOP/.625/1.312 OR PIN/.5/1.312	14.500c	23.750	9.250	None	P576
MA789	CROSS/C/.3125/2.875	LOOP/M10 OR PIN/.500/1.062	12.750c	20.500	7.750	None	P577
MA702	CROSS/C/.3125/2.875	LOOP/M10 OR PIN/.500/1.500	12.625c	20.750	8.125	None	P72
MA762	CROSS/C/.3125/2.875	LOOP/M10 OR PIN/.500/1.500	12.625c	20.625	8.000	None	P72
MA708	CROSS/C/.3125/2.875	STEM/.375-16	12.250c	19.875c	7.625	None	P1137
MA816	CROSS/O/.312/3.000	B&S/.500/1.625	13.875c	22.750	8.875	None	None
MA821	CROSS/O/.312/3.000	B&S/.500/1.625	15.250c	26.125	10.875	None	None
MA765	CROSS/O/.375/3.187	LOOP/M10 OR PIN/.500/1.500	12.875c	20.500c	7.625	None	P72
MA785	LOOP/.312_1.375	B&S/.625/2.000	9.500c	14.000c	4.500	L/R	P437
MA728	LOOP/.625/1.312 OR PIN/.5/1.312	14.250c	23.375	9.125	None	P572/P576	
MA730	LOOP/.625/1.312	B&S/.500/1.500	12.875c	21.000	8.125	None	None
MA773	LOOP/.625/1.312	B&S/12MM/1.500	13.500c	21.750c	8.250	None	None
MA769	LOOP/.625/1.312	B&S/12MM/1.500	14.125c	22.875c	8.750	None	P827
MA771	LOOP/.625/1.312	B&S/12MM/1.500	14.125c	22.875c	8.750	None	None
MA772	LOOP/.625/1.312	B&S/12MM/1.500	15.000c	24.750c	9.750	None	None

MA775	LOOP/.625/1.312	B&S/12MM/1.500	15.500c	25.750c	10.250	None	None
MA770	LOOP/.625/1.312	B&S/12MM/1.500	15.875c	26.375c	10.500	None	P827
MA727	LOOP/.625/1.312	LOOP/.625/1.312	12.750c	20.375	7.625	None	P573
MA812	LOOP/.625/1.312	LOOP/.625/1.312	12.750c	20.750	8.000	None	None
MA792	LOOP/.625/1.312	LOOP/.625/1.312	13.000c	21.250	8.250	None	None
MA820	LOOP/.625/1.312	LOOP/.625/1.312	14.375c	23.000	8.625	None	None
MA802	LOOP/.625/1.312	STEM/.375-16	11.375	18.125c	6.750	None	P1137
MA704	LOOP/.6875/1.562	LOOP/.6875/1.562	13.125c	21.250	8.125	None	P76
MA774	LOOP/.75/1.562	LOOP/14MM/1.562	13.500c	21.250c	7.750	None	P867
MA818	LOOP/.75/1.562	LOOP/14MM/1.562	14.875c	23.625c	8.750	None	P867
MA743	LOOP/M10 OR PIN/.625/1.312	B&S/.562/1.625	14.000c	23.000	9.000	None	P19
MA709	PIN/.500/1.062	STEM/.375-16	10.750c	17.375	6.625	None	P459/P1135
MA756	STEM/.375-16	B&S/.4375/1.875	10.250c	16.375	6.125	None	P1135
MA726	STEM/.375-16	B&S/.500/1.500	12.250c	19.750	7.500	None	P1134
MA809	STEM/.375-16	B&S/10MM/1.625	14.250c	21.500	7.250	L/R	P1278
MA777	STEM/.375-16	B&S/12MM/1.500	12.500c	20.500	8.000	None	P1135
MA793	STEM/.375-16	B&S/12MM/1.500	14.250c	23.750c	9.500	None	P1136
MA763	STEM/.375-16	CROSS/C/.312/2.500	12.125c	20.125	8.000	None	P941/P1136
MA711	STEM/.375-16	LOOP/.312_1.375	11.875c	19.625	7.750	None	P1134
MA815	STEM/.375-16	LOOP/.625/1.312 OR PIN/.5/1.312	12.250c	19.875c	7.625	None	P576/P1136
MA810	STEM/.375-16	LOOP/.625/1.312 OR PIN/.5/1.312	12.375c	20.500	8.125	None	P576/P1136
MA700	STEM/.375-16	LOOP/.625/1.312 OR PIN/.5/1.312	12.750c	21.375	8.625	None	P576/P1134
MA805	STEM/.375-16	LOOP/M10 OR PIN/.500/1.500	12.750c	19.500	6.750	None	P72/P1134
MA811	STEM/.375-16	LSTEM/.375-16	13.625c	22.250	8.625	None	P1134
MA705	STEM/.375-16	STEM/.375-16	10.875c	17.375c	6.500	None	Two/P1134
MA739	STEM/.375-16	STEM/.375-16	12.375c	20.875	8.500	None	Two/P1137
MA822	STEM_M10	CROSS/C/.3125/2.875	14.500c	24.375c	9.875	None	P1243
MA825	STEM_M10	SPECIAL(?)	15.000	25.750	10.750	None	17110297

#### STEERING STABILIZERS

Part #	Upper Mount	Lower Mount	Compressed	Extended	travel	Dust Sh.	Parts pack
SC2958	B&S/.500/1.500	B&S/.500/1.500	9.250	14.000	4.750	Yes	None
SC2961	B&S/.500/1.625	B&S/.500/1.500	14.500	24.375	9.875	No	None
SC2939	B&S/12MM/1.125	STEM/M12	11.625	19.125	7.500	No	None
SC2941	B&S/12MM/1.250	B&S/12MM/1.125	11.500	17.625	6.125	No	None
SC2960	B&S/12MM/1.375	B&S/12MM/1.375	13.625	22.625	9.000	No	None
SC2955	B&S/12MM/1.500	B&S/12MM/1.500	13.000	21.375	8.375	No	None
SC2922	LOOP/.312_1.375	LOOP/.625/1.312	15.375	26.375	11.000	No	P837
SC2928	LOOP/.625/1.312	B&S/.500/1.375	12.000	19.500	7.500	No	P837
SC2963	LOOP/.625/1.312	B&S/.500/1.250	12.500	20.625	8.125	No	P1368
SC2953	LOOP/.625/1.312	B&S/12MM/1.375	13.750	23.000	9.250	No	P837
SC2964	LOOP/.625/1.312	B&S/12MM/1.375	14.000	23.500	9.500	No	P1368

SC2951	LOOP/.625/1.312	LOOP/.312_1.375	17.500	28.875	11.375	No	P837
SC2917	LOOP/.625/1.312	LOOP/.625/1.312	11.625	18.750	7.125	No	Two_P848
SC2915	LOOP/.625/1.312	LOOP/.625/1.312	12.125	19.875	7.750	No	Two_P848
SC2911	LOOP/.625/1.312	LOOP/.625/1.312	13.250	22.875	9.625	No	Two_P1198
SC2916	LOOP/.625/1.312	LOOP/.625/1.312	13.250	22.250	9.000	No	Two_P848
SC2913	LOOP/.625/1.312	LOOP/.625/1.312	14.125	24.000	9.875	No	P837/P847
SC2946	LOOP/.625/1.312	LOOP/.625/1.312	16.500	25.625	9.125	No	Two/P1034
SC2957	LOOP/.625/1.312	LOOP/.625/1.312	17.000	26.875	9.875	No	Two_P1034
SC2937	LOOP/.625/1.312	LSTEM/.375-16	12.000	19.500	7.500	No	P837?P848
SC2942	LOOP/.625/1.312	LSTEM/.375-16	12.250	20.125	7.875	No	P837
SC2914	LOOP/.625/1.312	STEM/.375-16	12.750	21.500	8.750	No	P576/P1034
SC2944	LOOP/.625/1.312	STEM/.375-16	13.625	23.250	9.625	No	P837/P1098
SC2954	LOOP/.625/1.312	STEM/M12	17.875	26.500	8.625	No	P1034
SC2956	LSTEM/.375-16	LSTEM/.375-16	13.875	23.250	9.375	No	None
SC2962	LSTEM/.5-13	B&S/12MM/1.375	12.750	20.750	8.000	No	P1326
SC2940	STEM/.375-16	LOOP/.625/1.312	10.625	17.375	6.750	No	P843/P1098
SC2965	STEM/.375-16	LOOP/.625/1.312	15.625	27.375	11.750	No	P1134
SC2912	STEM/.375-16	STEM/.375-16	12.625	21.875	9.250	No	Two_P1098
SC2936	STEM/M12	B&S/12MM/1.250	15.000	21.000	6.000	No	None
SC2948	STEM/M12	LOOP/.625/1.312	12.500	19.875	7.375	No	P1034
SC2947	STEM/M12	LOOP/.625/1.312	15.375	23.625	8.250	No	P1034
SC2943	STEM/M12	STEM/M12	11.750	19.125	7.375	No	None